



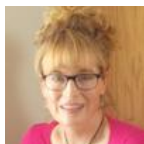
Hawthorn programs are transformative and alumni are entrepreneurs and professionals making a difference.

Hawthorn Alumni talk about their work and lives on the webinar series "All About Alumni", the 1st Wednesday of the month, at noon (pacific). Join us as graduates share their particular journeys. They provide tips and include specific and actionable resources as they talk about their paths in the marketplace post-graduation. Access previous full-length interviews when you **subscribe** to the Hawthorn YouTube channel. Review topics covered to-date in the table below:



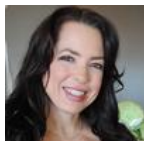
Sarah Saxby:
Valuing Your Knowledge and the Evolution of Your Practice

Katie Carter:
Weaving Nutrition, Yoga and Spirit in a Small Town Tapestry



Laurie Ellis:
Helping Youth Achieve a Healthy Weight with Holistic Nutrition

Tarah Chieffi:
Breaking Into the World of Health and Wellness



Jenny Yelle:
Designing & Managing a Successful Website: Au Naturelle Nutrition

Autumn Smith:
Nutrient Dense Foods in a Nutrient Starved World



Daniele Cook:
Happily Hungry: The Road to Building an Integrative Holistic Nutrition Program for Children Affected by Cancer and Chronic Conditions

Tracey Fox:
Holistic Nutrition in a Clinical Setting



Megan Fisher:
Helping Youth Achieve a Healthy Weight with Holistic Nutrition

Erin Chamerlik:
Building a Platform to Expand Your Influence and Adapt in a Changing Environment



Wendy Borden:
Healing Meals: Nourishing the Community One Meal at a Time

Rebecca Katz:
Connecting the Dots Between Food, Big Flavor, & Vibrant Health



Michelle Dwyer:
Creating Relationships as Key to a Successful Holistic Nutrition Practice

Graduates may also want to consider enrolling in a single Hawthorn elective course and combine one-to-one instruction and a deep focus on a single topic of interest.

Enrollment is open for the following courses now ([click here for more info](#)):

NHA 800 - Nutritional Needs for Healthy Aging

Develop nutrition plans for those who have attained 'wisdom' status.

DNI 810 - Nutrient, Drug, & Herb Interactions

Review significant herb and drug interactions.

MHNE 611 - The Business of Health & Nutrition Educators

Organization, networking, marketing, planning and accounting are the focus of this course.

Significant 2016 achievements:

- MSHN program courses were updated.
- Textbooks in all degree programs were reviewed and updated.
- Almost 40,000 new users engaged with the Hawthorn public website.
- 22 educational webinars were produced.
- 11 All About Alumni webinars were presented.
- A thorough self-examination review in preparation for submitting an application for accreditation to the DEAC (Distance Education Accrediting Commission), a national accreditation agency approved by the US Department of Education was conducted.

Notices

The Annie Appleseed Project

presents their 11th Annual Complementary & Alternative Cancer Therapies conference on March 2-4, 2017 in Palm Beach, Florida.



"Changing Our Minds" is the theme for the **3rd Wise Traditions Ireland Conference** March 25 & 26, 2017, in Thomond Park, Limerick.



Save the date for the **Weston A. Price Foundation**'s Minneapolis MN conference, November 10-12, 2017.

"Blazing Trails in Holistic Nutrition" is the theme for the

12th Annual NANP Conference and Expo, on May 4 - 7, 2017 in Portland Oregon.



If you're an NANP member and an enrolled Hawthorn student, you can apply for a conference scholarship following [this link](#).

Be prepared to explain why you want to attend the NANP Annual Conference in 300 words or less. The submission deadline is Friday, February 10th.

TAP Integrative launched in 2014 as a 501(c)(3) nonprofit educational resource to Teach, Advocate, and Practice integrative medicine. TAP aspires to create an international community of practitioners at the leading edge of clinical expertise

and inquiry of integrative healthcare. Integrative Therapeutics(TM) is the founding sponsor and generously supports TAP Integrative this exciting new endeavor.

Tap Integrative brings together:

- Original, expert article and multi-media content
- Peer to Peer, evidence-informed "gold standards" content
- Updates on the latest research articles
- Case discussions
- Interactive forums between members and experts
- Insights from different integrative healthcare experts each month
- Narrative platform for healthcare professionals, expert practitioners and scientists

By special arrangement, the usual \$149 membership fee will be waived for Hawthorn students or faculty when joining Tap Integrative. Coupon information is available to students and faculty on the Resource page of your Hawthorn student or faculty portal.



For more information please contact Kathy McDermott,
Director of Admissions & Student Management
kathy@hawthornuniversity.org
707-986-4153 x 401 Mon. - Fri. 9 am - 5 pm EST



Hawthorn University, PO Box 275, 475 Hungry Gulch Road,
Suite C, Whitethorn, CA 95589

[SafeUnsubscribe™ {recipient's email}](#)

[Forward this email](#) | [Update Profile](#) | [About our service provider](#)

Sent by jamesb@hawthornuniversity.org in collaboration with

Constant Contact 

Try it free today